



FLEXStorm



OUTDOOR
IP65



HIGH
BRIGHTNESS



HIGH
REFRESH



FANLESS



FRONT
SERVICEABLE



CUSTOM
SIZES

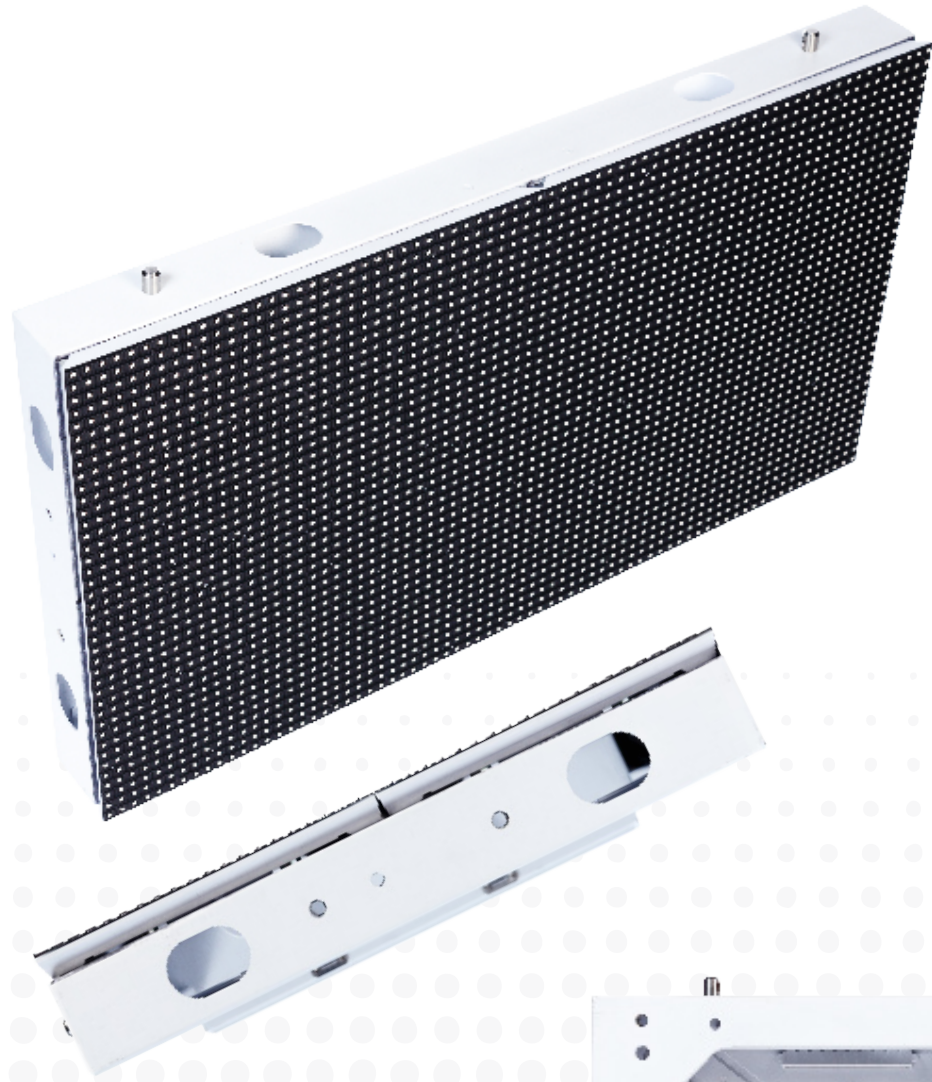


FIXED
INSTALL

Pixel**FLEX**™



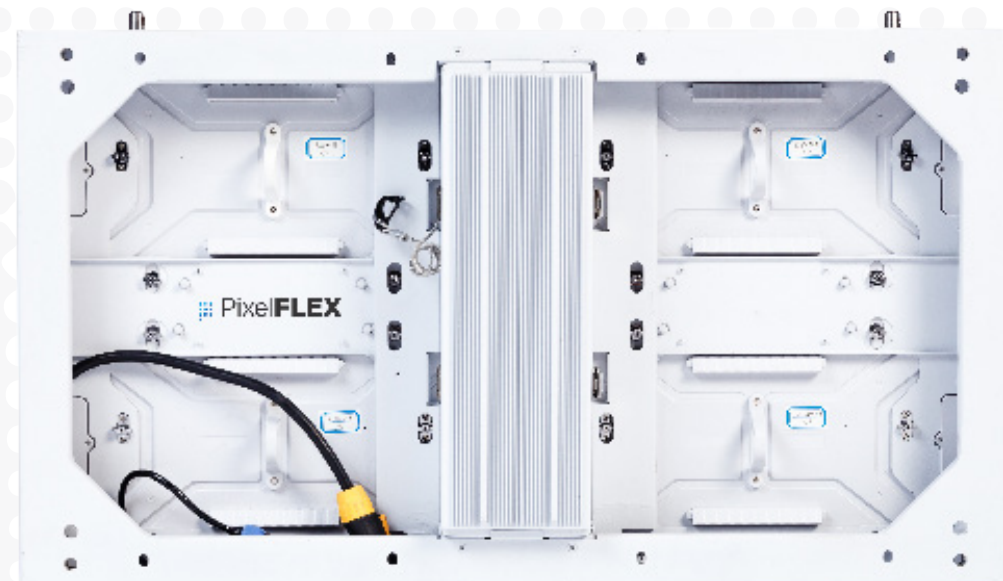
FLEXStorm



FLEXStorm is the industry's most comprehensive singular outdoor LED product line.

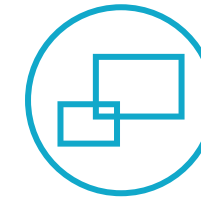
It is rated to withstand the harshest weather conditions while offering brightness levels 20% higher than any other LED products on the market and two times that of outdoor TVs. FLEXStorm is the perfect solution for billboards, amenity decks, parks, building-mounted displays, and outdoor retail spaces.

Customers across the U.S. have selected outdoor LED from PixelFLEX because of our commitment to providing a superior product, a U.S.-based warranty, and a comprehensive in-house service program.



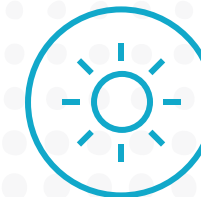
Easy Access

Modules are easily removed with an allen key for access to components.



Flexible Display Options

FLEXStorm is the FIRST of its kind designed to meet the demands of outdoor video screen design offering both 4:3 and 16:9 scaling ratios. The 16:9 ratio cabinet configuration helps achieve the right screen dimensions for your specific LED screen build.



High Brightness

The key to a quality outdoor LED display is variable brightness for any condition day or night. FLEXStorm has brightness offerings between 4500-10000 Nits.



IP-65 Weather Rating

A fully rated outdoor product is key to guaranteeing the longevity of your outdoor LED display.

BREATHTAKING DISPLAYS IN ANY WEATHER



Entertainment Displays

Make your amenity deck, park, or community living area an unforgettable space. FLEXstorm LED display panels also allow you to update your display from anywhere, making it easy for you to make a change when it's most convenient for you.



Advertising Signage

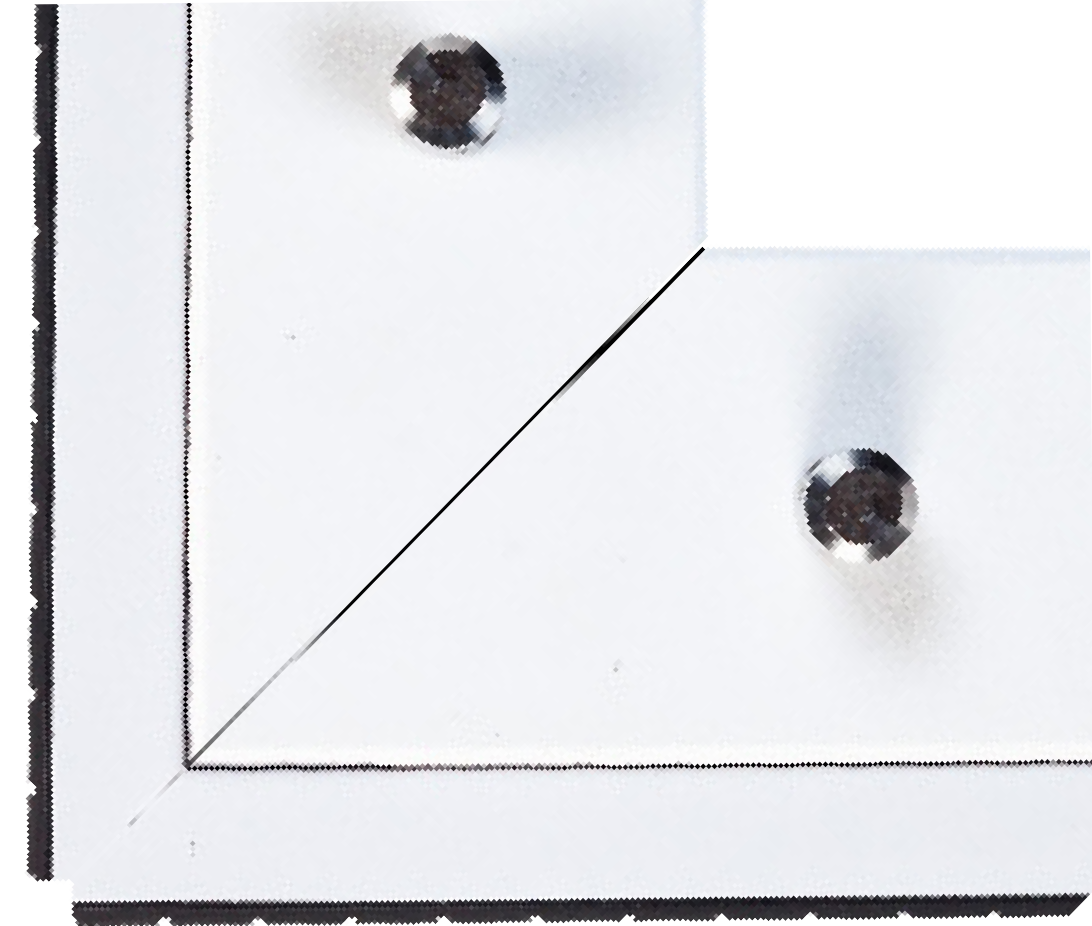
Take your billboard, retail space, or building-mounted display to the next level. FLEXstorm LED displays help to create an engaging and dynamic experience for customers by offering a range of pitch options that best matches your audience's distance from the display. Our team will help you build a display that matches your vision.



FLEXStorm

FlexStorm Specifications

Parameter	Outdoor					
Model	FSHD-2.9	FSHD-3.9	FSHD-4.8	FS2-6.67	FS2-8.33	FS2-10dip/smd
Pixel Pitch	2.97mm	3.9mm	4.8mm	6.67mm	8.33mm	10mm
Pixel Density (PSM)	112,896	65,536	43,264	27,650	15,552	8,640
Panel Size	500 x 1000mm / 19.68 x 39.37in 500 x 750mm / 19.68 x 29.53in 500 x 500mm / 19.68 x 19.68in			769.8 x 433mm, 769.8 x 649.5mm, 1154.7 x 433mm, 769.8 x 866mm, 1539.6*433mm, 1154.7 x 649.5mm, 1154 x 866mm, 1539.6 x 649.5mm, 1539.6 x 866mm		
Panel Depth	70mm			105mm		
Module Size	250 x 281.25mm			384.9 x 216.5mm (Modules per cabinet size - 4, 6, 6, 8, 9, 12, 12, 16)		
Panel Resolution	172x384 / 172x288 / 172x192	1128x288 / 128x216 / 128x144	104x232 / 104x174 / 104x116	64 x 36	48 x 27	36x20
Panel Weight	20kg / 44.109 lbs 15kg / 33.06 lbs 12kg / 26.45 lbs	20kg / 44.109 lbs 15kg / 33.06 lbs 10kg / 22.04 lbs		30kg / 66.1 lbs (psm)		
Serviceability	Full Front / Rear					
Brightness	4000 Nit	5000 Nit		6000- 10000 Nit	7500-10000 Nit	
Refresh Rate	3840Hz					
Viewing Angle (H/V)	140° / 90°			160° / 90°		
Operating Temperature	-4°F - 113°F / -20°C - 45°C			-22°F - 194°F / -30°C - 60°C		
Power Connection	Neutrik					
Working Power (Avg Max)	213 W/m ² 533 W/m ²	426 W/m ² 1,067 W/m ²		280 W/m ² 1800 W/m ²		
Curve Angle Capabilities	Up to a 90 Degree Right Angle			45 Degree Right Angle		
Input Power	AC 110/240V ; 50-60Hz					
Processing	NovaStar					
Data Connection	Molded IP65 Connector			Cat 5/6		
Lifetime Hours	100,000 Hours					
Weather Rating	IP66			IP65		
Certifications	CE / ETL / FCC / EMC			FCC / ETL / CE / EMC / CCC		



Right Angles

FLEXStorm increases your creative capabilities with its ability to create right angles.

Creative Options

FLEXStorm can create right angles as well as curve up to 0-90 degrees to meet your creative display needs outdoors.

Auto Brightness Adjustment

Utilizing an intelligent auto correcting light sensor control system, your outdoor LED screen installation will be the perfect brightness at all hours of the day to maximize the eyes on your screen.