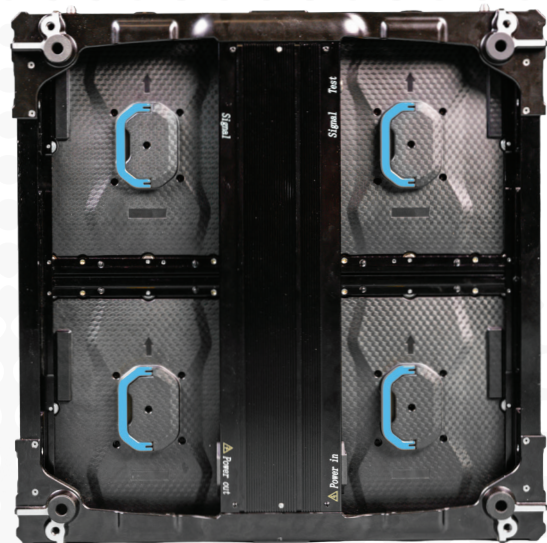
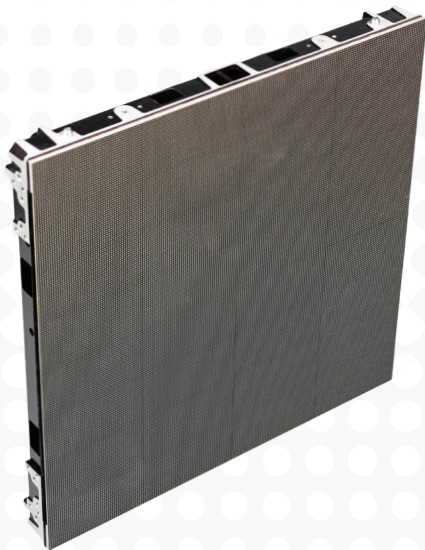




EF Series

The introduction of the new **EF Series** from PixelFLEX presents a fully front serviceable, economical solution for indoor LED installations while ensuring the high-quality standards you expect from PixelFLEX. In addition to the tiles simplistic design, it is fully front serviceable making it ideal for wall mount solutions in churches, corporate facilities and much more.



FRONT
SERVICEABLE



LIGHTWEIGHT



HIGH
RESOLUTION



FANLESS



FIXED
INSTALL



INDOOR



COLOR
LIGHT

FEATURES

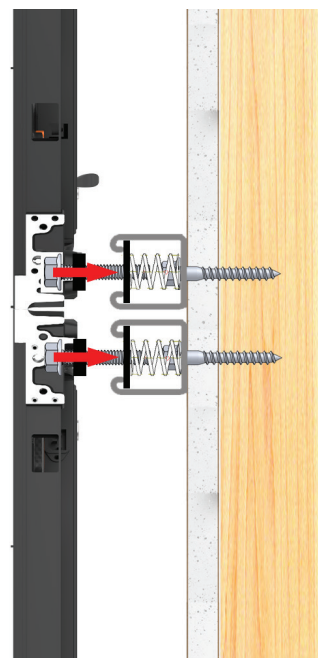
FULL FRONT & REAR SERVICEABILITY

EF Series LED tiles are designed with serviceability in mind for permanent install. This tile is 100% front and rear serviceable.



MOUNTING

The EF Series LED Tile is specifically designed for easy wall mounting solutions where its lightweight and simplistic design attaches to standard Uni-Strut system.



EF Series							
Parameter	Indoor						
Model	EFi2-1.9	EFi2-2.6	EFi2-3.1	EFi2-3.9	EFi2-4.8	EFi2-6.9	EFi2-7.8
Pixel Pitch	1.9mm	2.6mm	3.1mm	3.91mm	4.81mm	6.9mm	7.8mm
Pixel Density (PSM)	270,400	147,456	102,400	65,536	43,264	20,736	16,384
Panel Size	500 x 500 x 42mm / 19.69 x 19.69 x 2.12						
Panel Resolution	256 x 256	192 x 192	160 x 160	128 x 128	104 x 104	72 x 72	64 x 64
Panel Weight	5.6 kg / 12.34 lbs						
Serviceability	Fully Front and Rear						
Brightness	800 Nit	1200 Nit					
Refresh Rate	>3840Hz						
Grey Scale	16 Bit						
Viewing Angle (H/V)	160° / 140°						
Operating Temperature	-4°F ~ 140°F / -20°C ~ 60°C						
Power Connection	Neutrik Powercon						
Working Power (Avg:Max)	70/180 w/Panel						
Input Power	Molded IEC						
Processing	NovaStar						
Data Connection	Cat 5						
Lifetime Hours	100,000 Hours						
Weather Rating	IP20						
Certifications	CE/ FCC / ETL / RoHS						

*All specifications are property of PixelFLEX LLC., and are subject to change without notice. Please verify specifications and information before final sale.