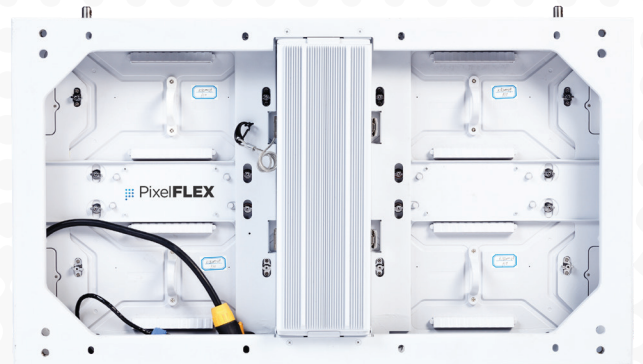
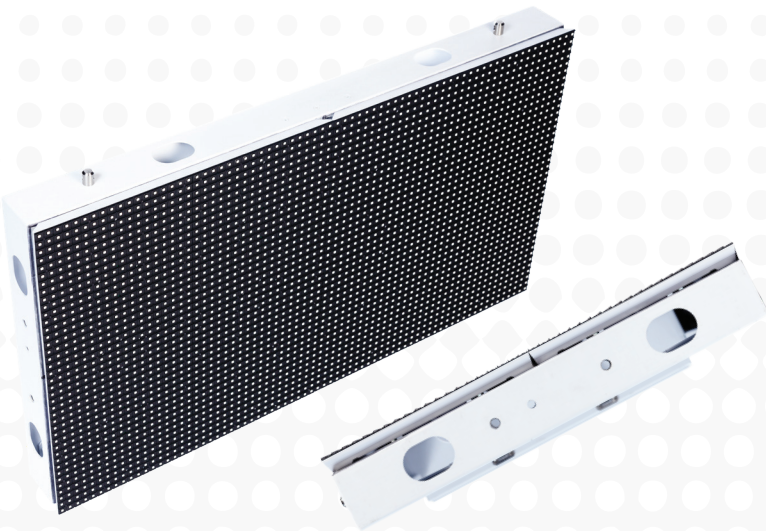




FLEXStorm

FLEXStorm is designed and built to withstand adverse weather conditions and provide a truly breathtaking outdoor LED display option you can depend on. FLEXStorm can be used as outdoor advertising, entertainment, and much more. Update your display from anywhere with the click of a button using cloud-based content management.



OUTDOOR
IP65



HIGH
BRIGHTNESS



HIGH
REFRESH



FANLESS



FRONT
SERVICEABLE



CUSTOM
SIZES



FIXED
INSTALL

FEATURES

Each cabinets electronics and data control is easily accessible with T-handle that remove individual modules to access power and data boxes on board the LED displays frame. Additionally, power and data can be accessed through a door on the rear of the unit. Modules can easily released by hand and pulled through the frame for replacement and servicing.

FLEXStorm is one of the highest resolution outdoor product on the market. Pitches available include 4.8, 6, 8, and 10mm in both SMD and DIP LED configurations.



A fully IP-65 weather rated product guarantees longevity and durability of your outdoor LED display screen.

FLEXStorm Specifications

Parameter	Outdoor			
Model	FS2-4.81	FS2-6.67	FS2-8.33	FS2-10dip/smd
Pixel Pitch	4.81mm	6.67mm	8.33mm	10mm
Pixel Density (PSM)	43,200	27,650	15,552	8,640
Panel Size	769.8 x 433mm, 769.8 x 649.5mm, 1154.7 x 433mm, 769.8 x 866mm, 1539.6 x 433mm, 1154.7 x 649.5mm, 1154.7 x 866mm, 1539.6 x 649.5mm, 1539.6 x 866mm			
Panel Depth	105mm			
Module Size	384.9 x 216.5mm (Modules per cabinet size - 4, 6, 6, 8, 8, 9, 12, 12, 16)			
Module Resolution	80 x 45	64 x 36	48 x 27	36 x 20
Panel Weight	30kg/66.1 lbs PSM			
Serviceability	Full Front / Rear			
Brightness	6000-7500 Nit	6000-10000 Nit	7500-10000 Nit	7500-10000 Nit
Refresh Rate	≥ 3840Hz			
Viewing Angle (H/V)	160° / 90°			
Operating Temperature	-22°F - 122°F / -30°C - 50°C			
Power Connection	Neutrik			
Working Power (Avg:Max)	280 W/m² : 800 W/m²			
Curve Angle Capabilities	45 Degree Right Angle			
Input Power	AC 110/240V ; 50-60Hz			
Processing	NovaStar			
Data Connection	Cat 5/6			
Lifetime Hours	100,000 Hours			
Weather Rating	IP65			
Certifications	FCC ETL CE EMC CCC			

*All specifications are property of PixelFLEX LLC., and are subject to change without notice. Please verify specifications and information before final sale.