



FLEXStorm



OUTDOOR
IP65



HIGH
BRIGHTNESS



HIGH
REFRESH



FANLESS



FRONT
SERVICEABLE

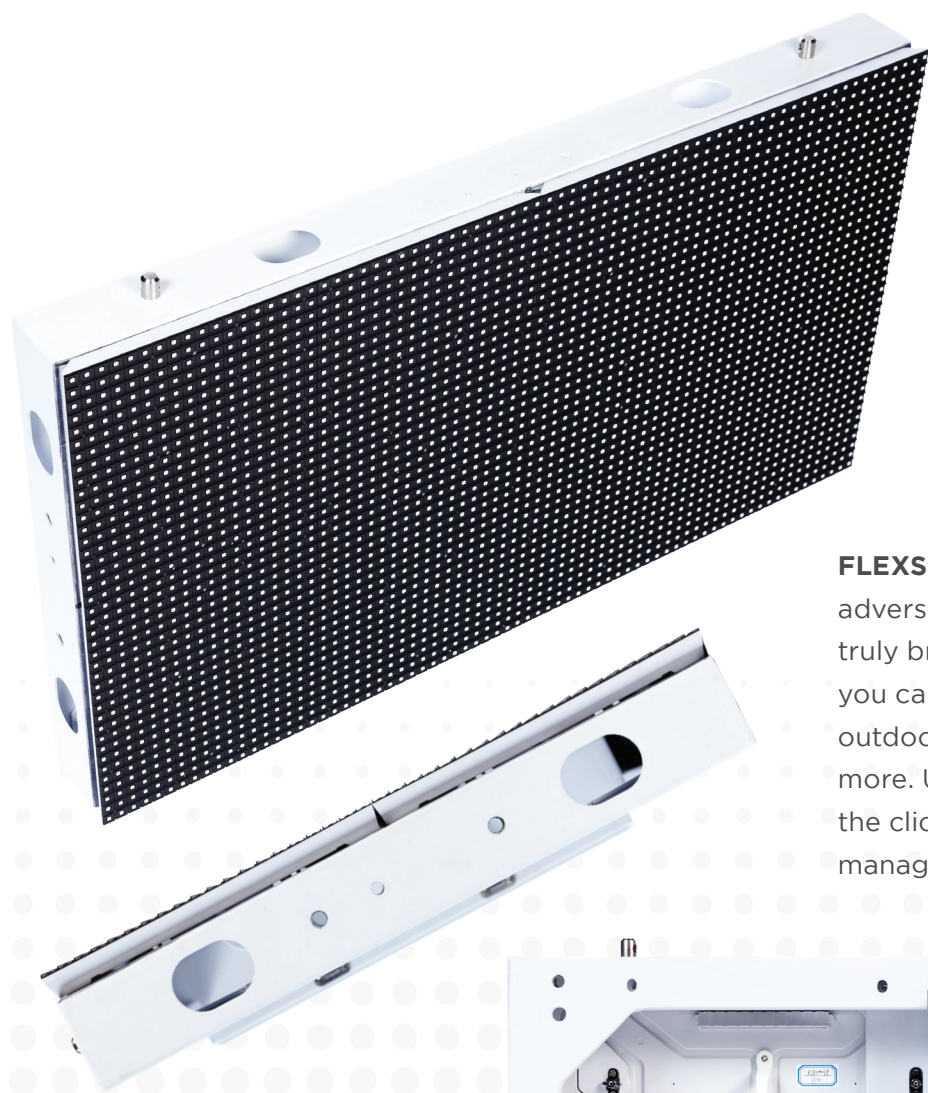


CUSTOM
SIZES



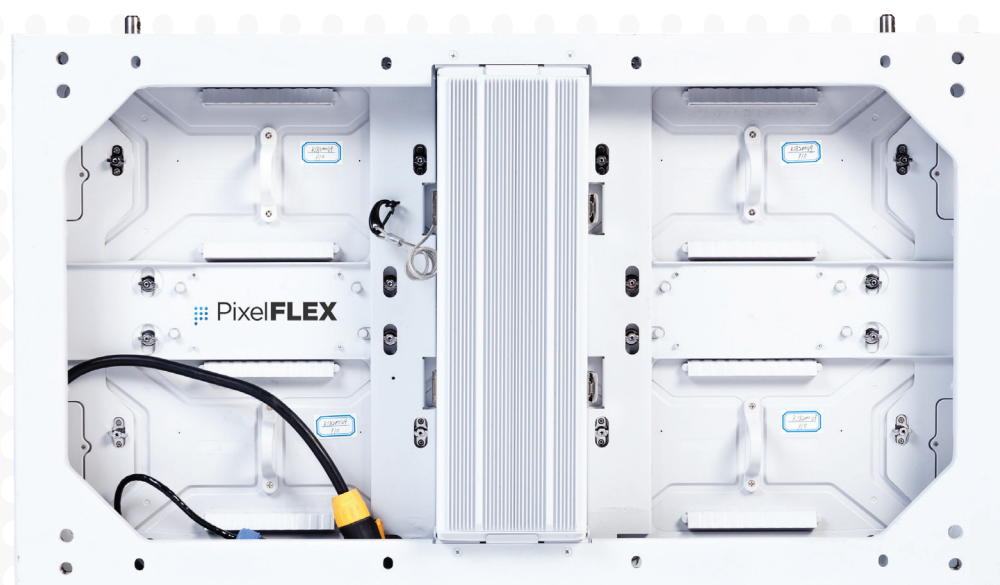
FIXED
INSTALL

Pixel**FLEX**™

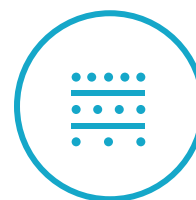


CONSTRUCTED TO ENDURE & LOOK BRILLIANT DOING IT

FLEXStorm is designed and built to withstand adverse weather conditions and provide a truly breathtaking outdoor LED display option you can depend on. **FLEXStorm** can be used as outdoor advertising, entertainment, and much more. Update your display from anywhere with the click of a button using cloud-based content management.

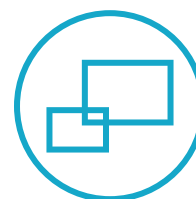


ADVANTAGE



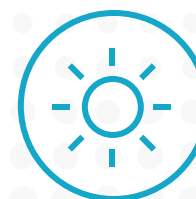
Improved Pitch Offerings

FLEXStorm is one of the highest resolution outdoor product on the market. Pitches available include 3.9, 4.8, 6, 8, 10 and 16mm in both SMD and DIP LED configurations.



16:9 Ratio Tile Design

FLEXStorm is the **FIRST** of its kind designed to meet the demands of outdoor video screen design. Available in several sizes, the 16:9 ratio cabinet configuration helps achieve the right screen dimensions for your specific LED screen build.



INDUSTRY LEADING BRIGHTNESS

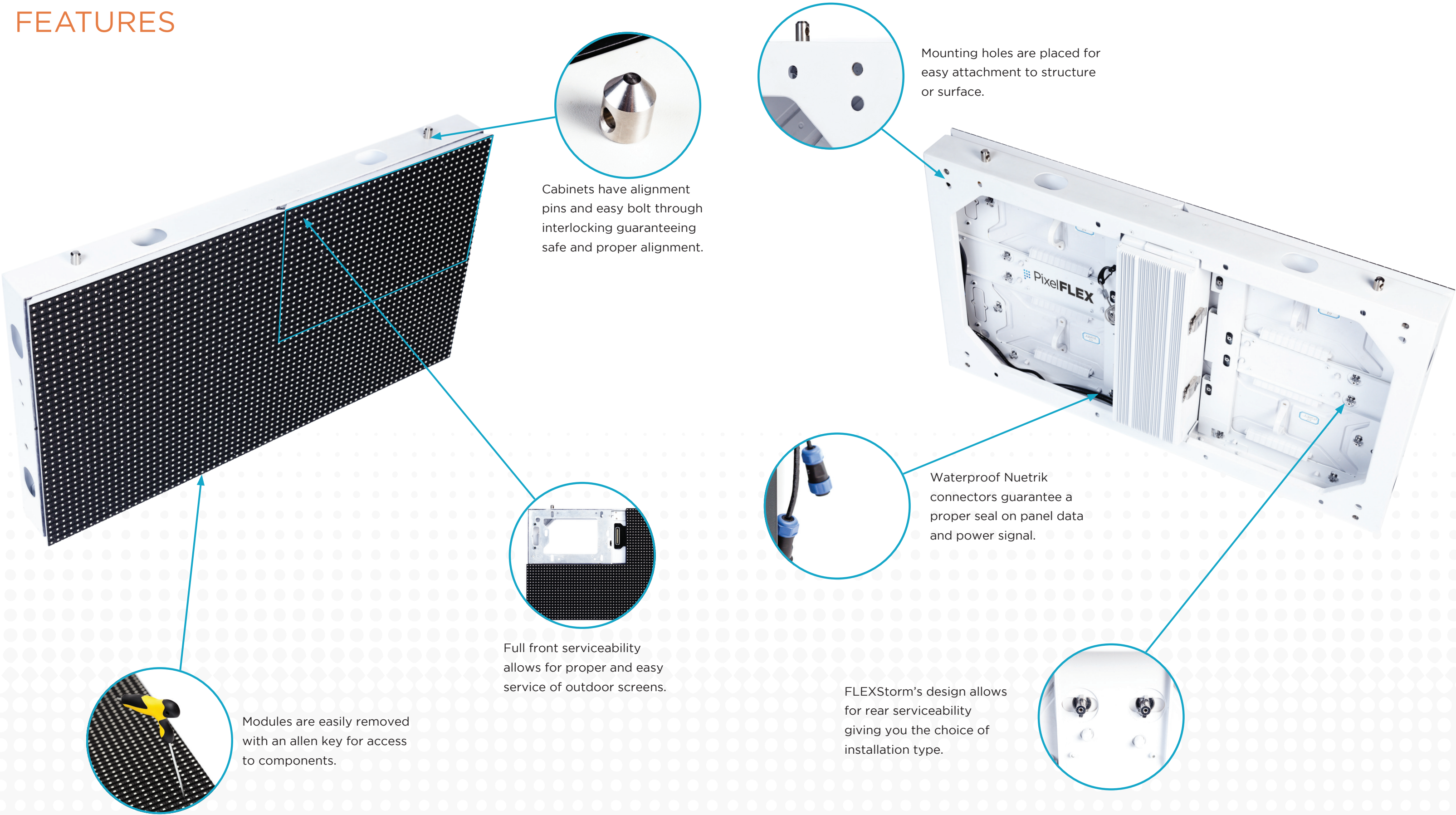
The key to a quality outdoor LED display is variable brightness for any condition day or night. FLEXStorm has brightness offerings between 6000-10000 Nits.



IP-65 WEATHER RATING

A fully rated outdoor product is key to guaranteeing the longevity of your Outdoor LED display screen.

FEATURES



ACCESSIBILITY

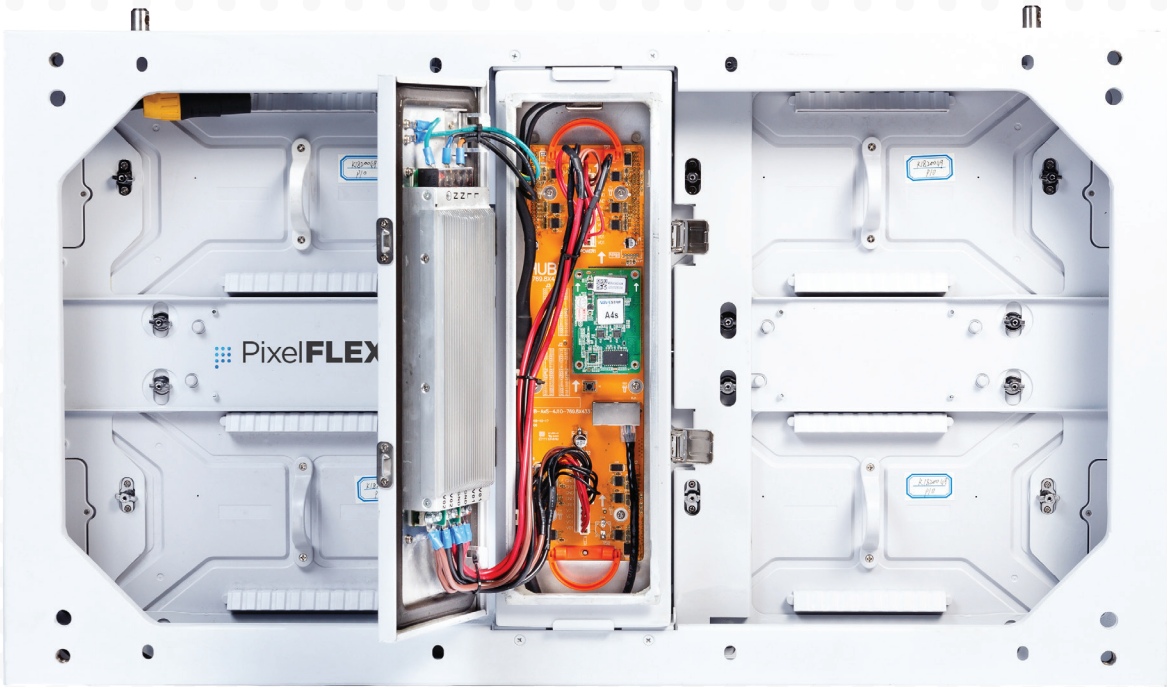
FULL FRONT SERVICEABILITY

Each cabinets electronics and data control is easily accessible with T-handle that remove individual modules to access power and data boxes on board the LED displays frame.



REAR SERVICEABILITY

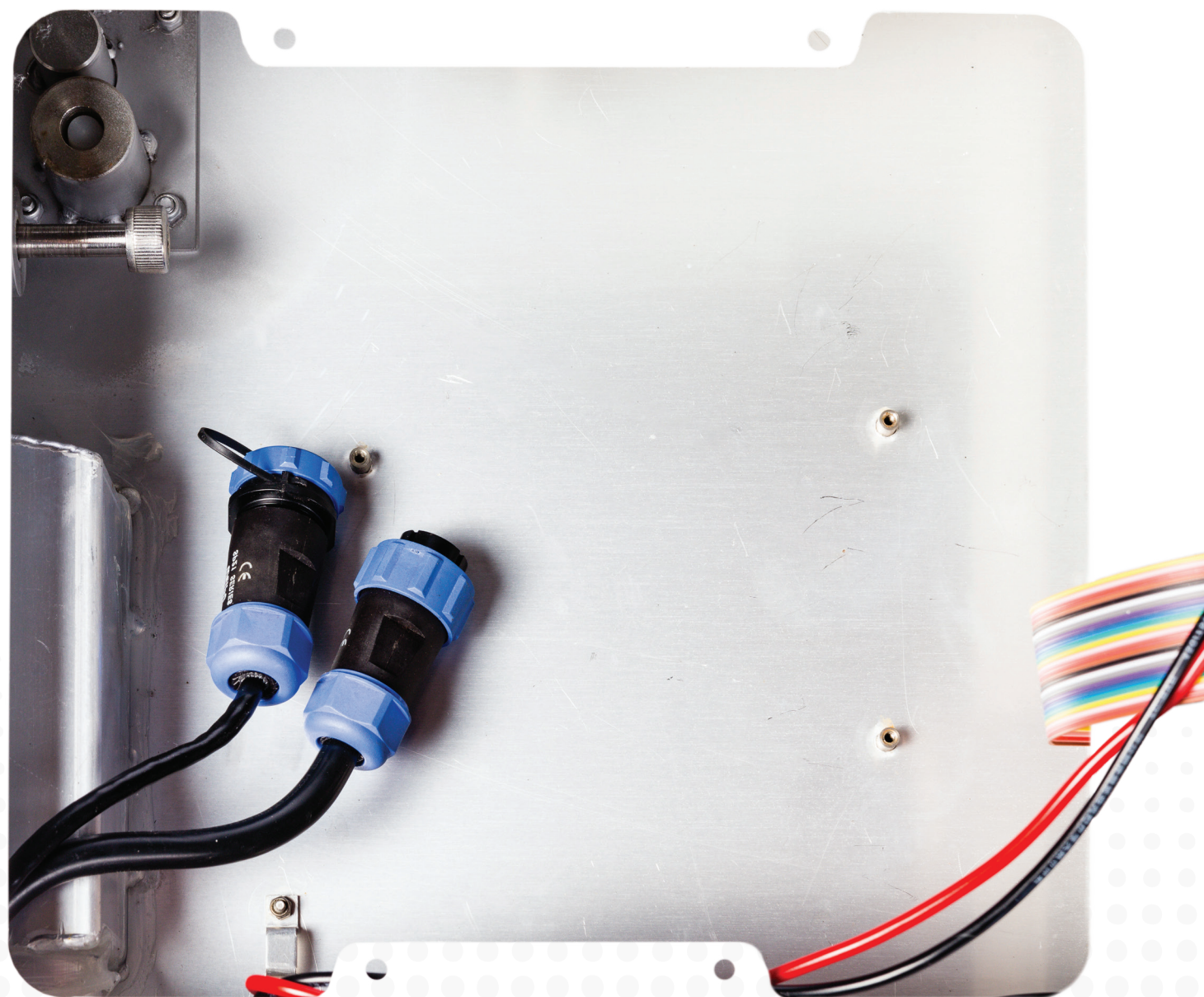
Power and data can be accessed via rear access door. Modules can be release by hand and pulled through the frame for replacement and servicing..





CREATIVE OPTIONS

Creative designs are no longer bound for indoor use. FLEXStorm can create right angles as well as curve up to 45 degrees to meet your creative display needs outdoors.



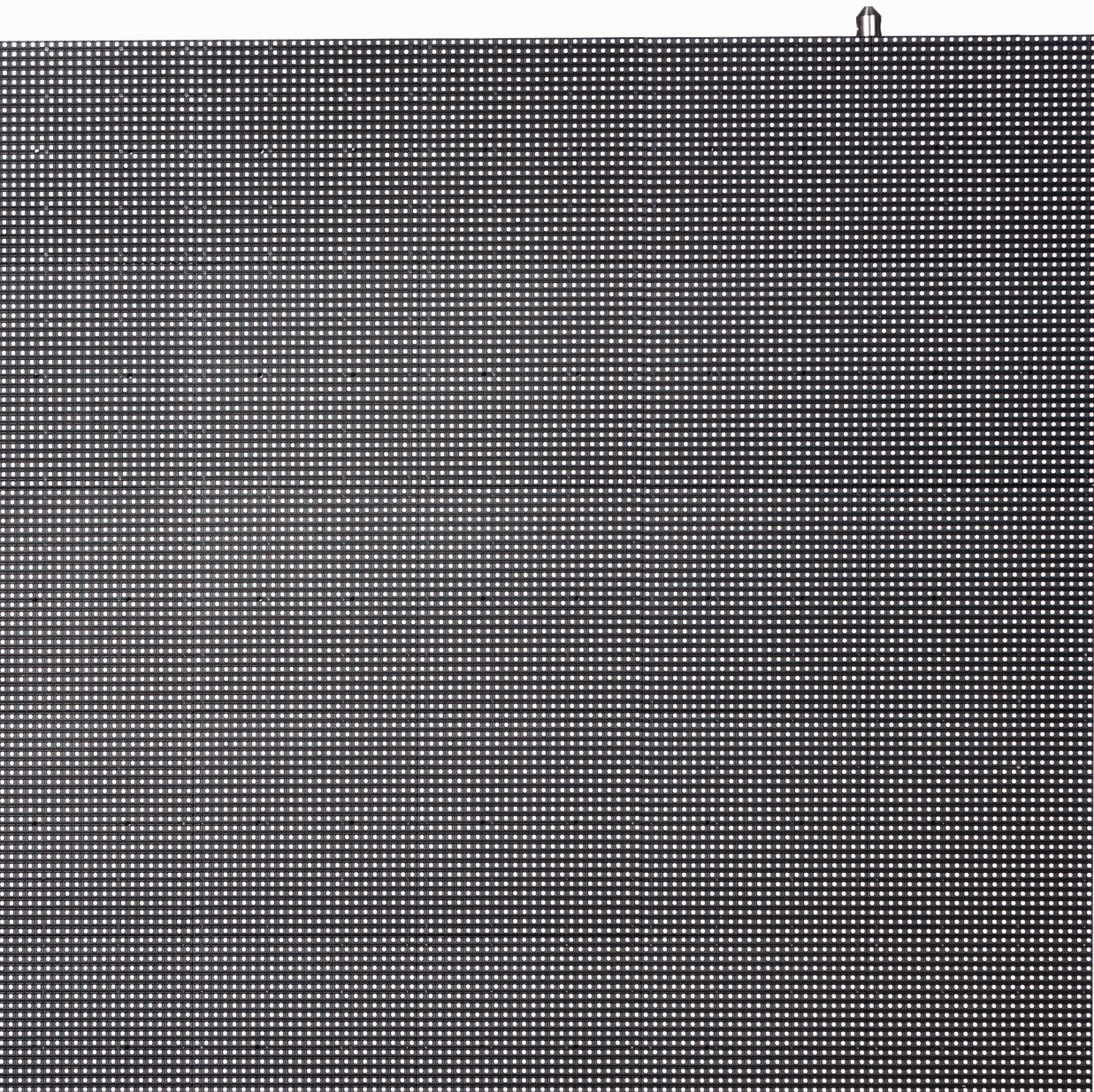
STABLE, RELIABLE CONNECTIONS

FLEXStorm utilizes data and power connections that are 100% water tight allowing for stable and reliable connections between each outdoor LED display cabinet.



AUTO BRIGHTNESS ADJUSTMENT

Utilizing an intelligent auto correcting light sensor control system, your outdoor LED screen installation will be the perfect brightness at all hours of the day to maximize the eyes on your screen.



APPLICATION



FLEXStorm Specifications						
Parameter	Outdoor					
Model	FS2-3.9	FS2-4.81	FS2-6.67	FS2-8.33	FS2-10dip/smd	FS2-16.67dip
Pixel Pitch	3.9mm	4.81mm	6.67mm	8.33mm	10mm	16.67mm
Pixel Density (PSM)		43,200	27,650	15,552	8,640	3,744
Panel Size	769.8 x 433mm, 769.8 x 649.5mm, 1154.7 x 433mm, 769.8 x 866mm, 1539.6*433mm, 1154.7 x 649.5mm, 1154.7 x 866mm, 1539.6 x 649.5mm, 1539.6 x 866mm					
Panel Depth	105mm					
Module Size	384.9 x 216.5mm (Modules per cabinet size - 4, 6, 6, 8, 8, 9, 12, 12, 16)					
Module Resolution	COMING SOON	80 x 45	64 x 36	48 x 27	36 x 20	24 x 13
Panel Weight		30kg/66.1 lbs PSM				
Serviceability		Full Front / Rear				
Brightness		6000-7500 Nit	6000-10000 Nit	7500-10000 Nit	7500-10000 Nit	7500-10000 Nit
Refresh Rate		≥ 3840Hz				
Viewing Angle (H/V)		160° / 90°				
Operating Temperature		-22°F - 122°F / -30°C - 50°C				
Power Connection		Neutrik				
Working Power (Avg:Max)		280 W/m² : 800 W/m²	280 W/m² : 800 W/m²	280 W/m² : 800 W/m²	280 W/m² : 800 W/m²	280 W/m² : 800 W/m²
Curve Angle Capabilities	45 Degree Right Angle					
Input Power	AC 110/240V ; 50-60Hz					
Processing	NovaStar					
Data Connection	Cat 5/6					
Lifetime Hours	100,000 Hours					
Weather Rating	IP65					
Certifications	FCC ETL CE EMC CCC					

*All specifications are property of PixelFLEX LLC., and are subject to change without notice. Please verify specifications and information before final sale. FLEXStorm cabinet sizes above are listed as maximum size and can be made in other size cabinets. Speak with a sales representative about your specific needs.